

Power Generation Solutions





Table Of Contents

2

Committed To Safety	3
Why Choose Liquidmetal Industrial Solutions	6
Who We Are.....	7
Power Generation Solutions	10
Combined Cycle Solutions.....	11
Inspections	12
Abrasive Blasting, Carbon Fiber Wrap, Epoxies	13
Weld Overlay (Metallization).....	14
Mechanical Solutions.....	15
Outage Execution	17
Project Management	18



Our Entire Team Is Committed To Safety

3

EMR Under 0.65
1.5 Million + Hours Accident Free
ISNetworld A+ Rating



We are committed to:

- Providing a safe workplace.
- Continually establishing and maintaining safety procedures and practices.
- Providing effective safety training.
- Consulting with professionals, management, and employee representatives to review and maintain health and safety in the workplace.
- Cultivating personal responsibility for safety.
- Promoting a safe and early return to work for injured employees.
- Identifying and managing all risks and hazards.
- Monitoring employees' fitness and health.
- Upholding health and safety regulations, and all relevant standards.
- Working together to eliminate injury.
- Accurate reporting and recording of injuries and accidents if they occur.





Why Choose Liquidmetal Industrial Solutions

6

- An innovative contractor providing “outside the box” solutions.
- Willingness to partner and put “skin in the game”.
- Specialty turnkey services with hybrid teams, reducing the need for additional contractors.
- Ownership, limiting “finger pointing” and lost time/standby costs between contractors.
- Ability to complete multiple tasks in a space with different crafts.
- 24/7 emergency response.
- Quality workmanship with an impeccable track record for successful x-rays of pressure part welds.
- Safety culture with over 1.5+ million hours without a lost time accident.
- Experienced and knowledgeable managers and supervisors with extensive backgrounds at companies such as Babcock/TEI, Brahma, First Energy, Foster Wheeler, Duke Energy, TUV and WSI/SMS/AZZ, Basin Electric, and Great River Energy.



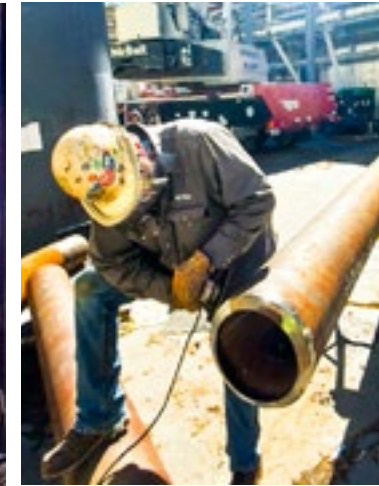
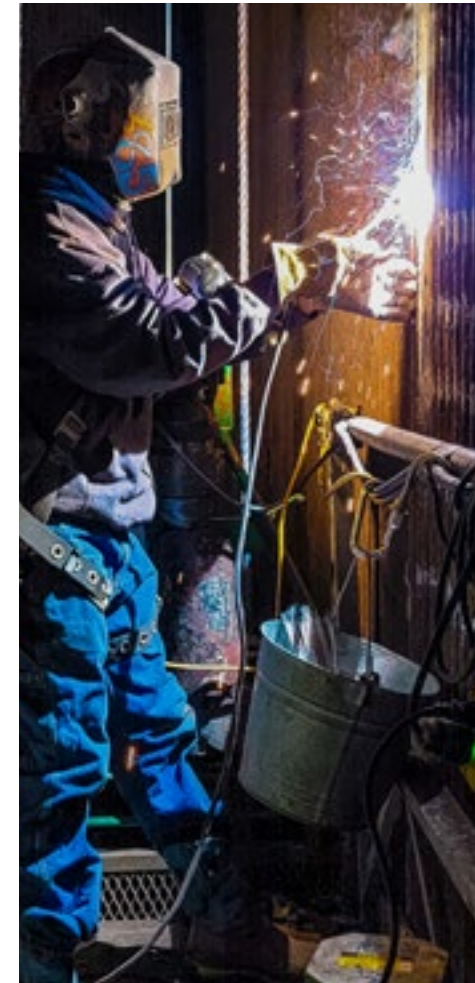
Who We Are

7

Liquidmetal Industrial Solutions has been in business for over 40 Years.

Mechanical solutions, cleaning, and inspection services are provided as part of a complete predictive and preventative maintenance strategy to reduce downtime.

- Headquarters, Operations, Production and R&D Facility located in Chattanooga, Tennessee.
- Patented technology rights for amorphous materials.
- 2007 – Purchased Foster Wheeler Coatings Division.
- 2014 – Mechanical Services Division added.
- 2020 – Reorganized company to better serve our partners.
- 2024 – Coatings Division and Materials Division sold allowing us to focus on the growing demand for Mechanical, Inspections, Sandblasting, and Weld Overlay reinforcing our dedication to delivering tailored, high-quality solutions to our industrial customers.
- Nationwide coverage.
- Non-Union contractor.



Liquidmetal Industrial Solutions offers a wide range of services, and solutions to extend the life of your equipment and prevent downtime.

- Turnkey Outage Contractor
- Project Management
- Inspections
- 24/7 Emergency Response/Support
- Waterwall Replacements
- Economizer, Superheater and Reheater Repairs/Replacement
- Specialty Pressure Part Welding
- Pump and Motor Alignment
- Air Preheaters
- Scrubbers
- Spray Dryer Absorbers
- Process and Steam Piping
- Valve Replacement
- Automated/Manual in-field Weld Overlay
- Tank Repairs/Replacement
- Balance of Plant



Combined Cycle Solutions

11

At Liquidmetal Industrial Solutions, we provide a thorough analysis of your unit's expansion joints, cold casing ductwork, and penetration seals. Our service consolidates all findings into a single, detailed report that offers both current condition assessments and future repair recommendations. Trust us to ensure the longevity and optimal performance of your equipment with precise, actionable reports and expert recommendations.

Our analysis includes:

- Detailed Condition Assessment: In-depth inspection of unit components
- Repair Priority List: Clear, actionable steps based on severity
- Photographic Documentation: Visual evidence for clarity
- Thermographic Analysis: Temperature-based diagnostic insights

We Install the Following Expansion Joints:

- Air Inlet Expansion Joints
- HRSG Inlet Expansion Joints
- Pipe Penetration Seals
- Roof, Floor, Side Entry
- Fabric and Metal
- Clamshells
- Stack Inlet Expansion Joints

HRSG Related Services:

- Diffuser Rebuilds
- Trough Rebuilds
- Transition Duct
- Hot spot/liner plate repair and re-insulating
- Complete casing replacement



Inspections

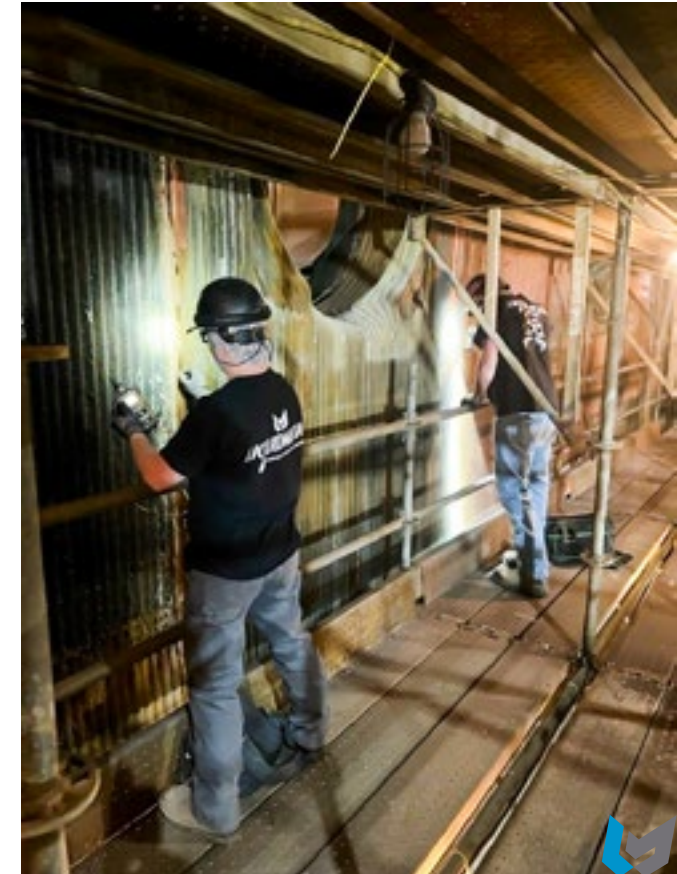
12

Our level II NDT Inspectors are SNT-TC-1A Certified.

- Detect defects before they result in severe damage or non-compliance.
- Monitor company assets by non-intrusive methods.
- Ensure safe and reliable operations of your facility.
- Save time and money through fast and effective testing of your assets and equipment at every stage of their lifespan – from manufacturing to on-site operation.

Applications

- Boilers
- Tubular air heaters
- Spreads
- Backpass
- Safe Duct
- Burners
- Steam and Mud Drums
- Flue and Air Duct
- Penthouse
- External Walk Down
- Visual and UT testing on coal piping
- UT inspection of silo/tank walls



Abrasive Blasting, Carbon Fiber Wrap, Epoxies

13

Abrasive Blasting is the process of cleaning and preparing a surface using a hard media to remove debris, buildup, and foreign materials.

Carbon Fiber Wrap is ideal for tank or piping repairs in all types of industries, conditions, and materials to protect against corrosion and erosion. They are used when unit/process shutdown or replacement is not an option.

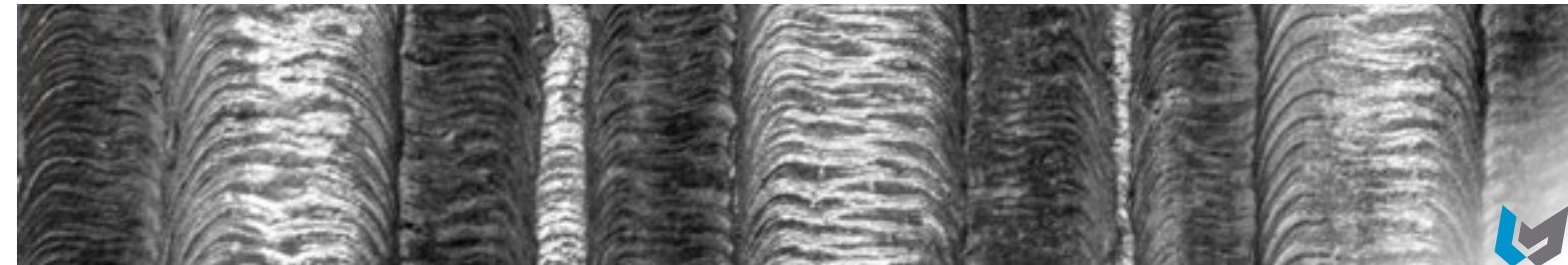
Epoxy is a coating system used to seal the base metal to create corrosion and/or erosion-resistant surfaces. It can be applied as a spray-on or roll-on product.



Weld Overlay (Metallization)

14

- 30+ Automatic MIG Overlay Systems in fleet
- Boiler, Tank, and Pressure Vessel welding
- Vertical down, horizontal, flat, and overhead
- Automatic Height Control allows welding over uneven surfaces
- Weld thickness ranges from .050" to .250"
- Minimum 50% overlap
- Pulsed Gas Metal Arc welding process



Mechanical Solutions

15

For over a decade, Liquidmetal Industrial Solutions has demonstrated expertise in delivering successful mechanical solutions at key industrial sites across the United States.

We are experts at repairing or replacing virtually any component!

Plant Equipment

Coal and gas-fired boilers
Airheaters
High Energy Piping
Coal handling
Scrubbers
ID/FD Fans
Ductwork
SCR
CC and SC Combustion Turbines
HRSGs
Piping and Valves
Tanks

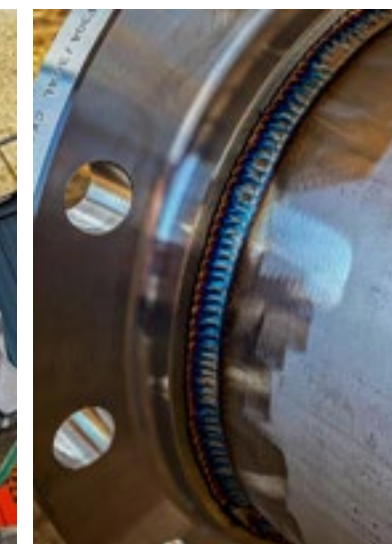
Certifications

NBIC R Stamp and ASME S Stamp
ASME Sect I Boilers
ASME Sect VIII Pressure Vessels
API 650 AND 653 Tanks



Specialties

Turnkey Outage Contractor
24/365 Emergency Response/Support
Project Management
Inspections
Waterwall Replacements
Specialty Pressure Part Welding
Economizer, Superheater and Reheater
Repairs/Replacement
Automatic weld overlay
Sandblasting and ventilation
Welding of specialty materials
such as high chrome alloys



Outage Execution

17

- Providing boiler project managers that oversee and coordinate all craft vendors.
- Enforcing all safety and environmental requirements including lock-out tag-out, clearances, and confined space permits.
- Monitoring Quality Control and Quality Assurance provided throughout the project.
- Scheduling, work scope, and budget from start to finish.
- Scheduling all outage activities including adjusting the work scope, schedule, and budget as discovery repairs are identified.
- Prioritizing all discovery work and coordinating efforts to secure funding for unfunded discovery work that is beyond the original work scope.
- Providing alternative cost-effective methods of repair for unexpected discovery repairs.
- Functioning as company representative directing all work and overseeing boiler turn-over meetings with vendors.
- Attending daily outage meetings and provide updates on work scope, safety, environmental, schedule, and budget.
- Enforcement of daily maintenance and housekeeping requirements.

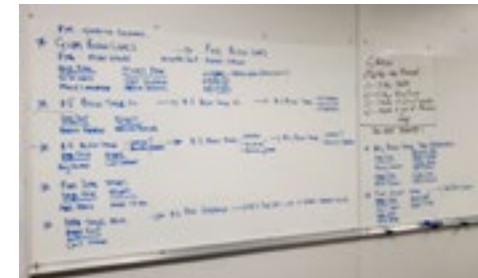


Project Management

18

Liquidmetal Industrial Solutions successfully manages outages/projects with substantial numbers of various vendors and crafts.

- Develops a plan to complete the project on budget and on time.
- Provides safety manager(s) to ensure safety to all personnel including Liquidmetal Industrial Solutions, mill, and other craft vendors.
- Supervises timely execution of tasks.
- Conducts shift turnover meetings to communicate project safety and job status.
- Manages multiple vendors on site.
- Reviews manpower and supplies necessary to complete the project.





6207 Jim Snow Way, Chattanooga, Tennessee 37421

www.liquidmetal-solutions.com

Info@liqmetis.com

423-541-3210

